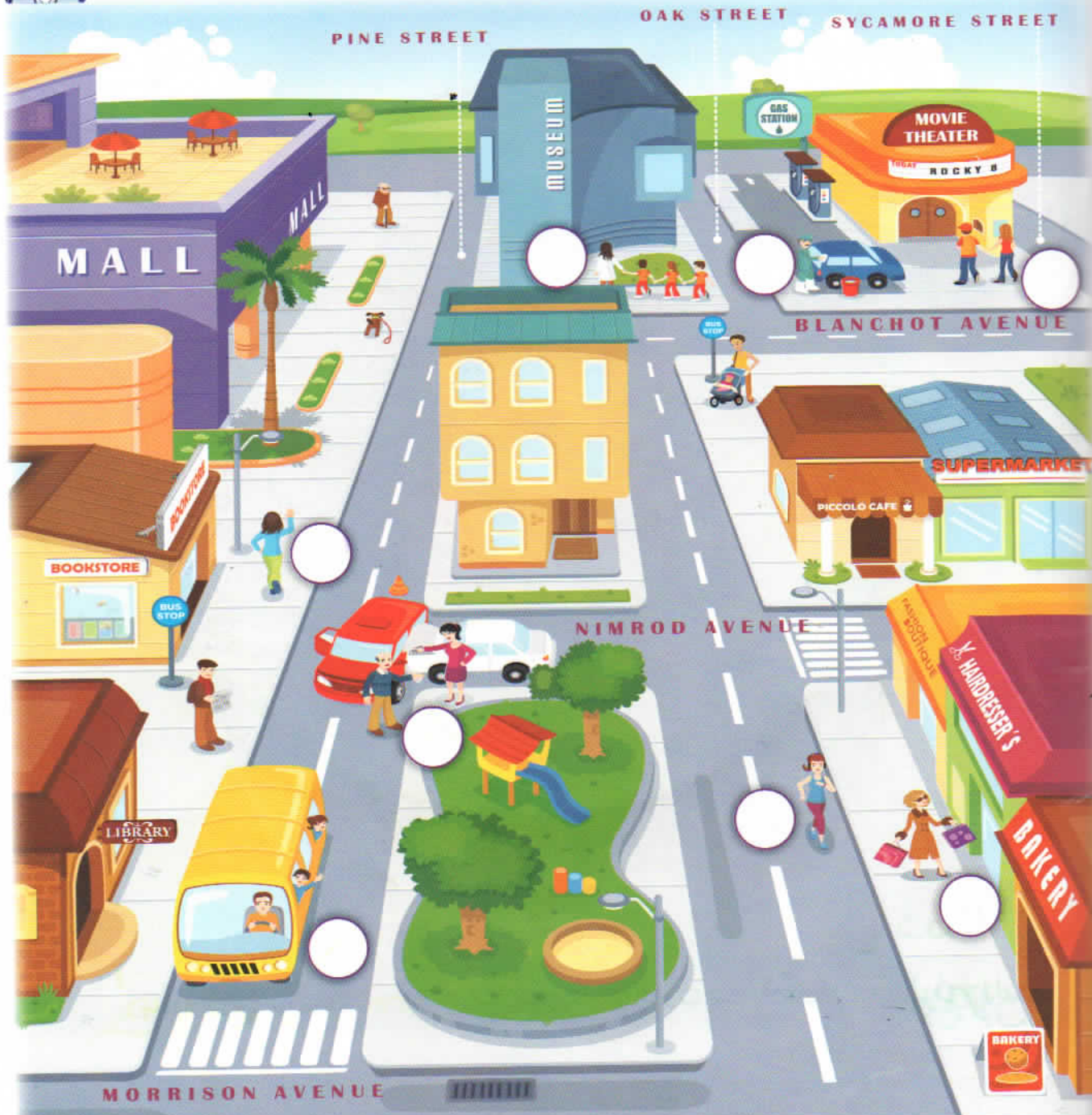




11. Describe the scenes. Then, listen and match each situation with the corresponding picture.



### Remember

#### Use on

- to talk about specific dates. *My birthday is on July 3<sup>rd</sup>.*
- to designate names of streets. *I live on the corner of Oak Street.*
- to talk about certain means of transport. (bus, train, plane). *She's on a train.*

#### Use in

- to talk about months, seasons and years. *My birthday is in July. In summer we have a great time!*
- to talk about towns, countries, states and continents. *I live in Toronto.*
- to talk about certain means of transport (car, taxi). *She's in my car.*

#### Use at

- to talk about time. *The party is at 3:00 pm.*
- to refer to specific addresses. *I live at 55 Belioz Street. At the end of the street. Turn left at the shop.*
- to refer to a specific place. *I was standing at the bus stop. A concert at the Odeon.*



12. Get into pairs. Choose a starting point on the map. Give and follow directions in order to get to different places.

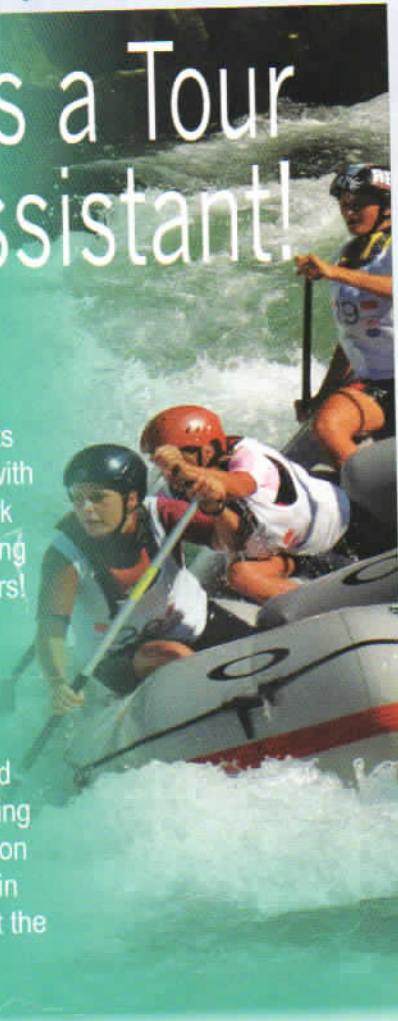
**Useful Expressions**

Excuse me, how can I get to...?  
 Walk two/three blocks and turn left/ right...  
 Walk straight ahead for two/ three blocks....

The (place) is in front of/ next to/ behind /  
 across from / between the... and the...  
 The (place) is on the corner of...

13. Read the following job descriptions. Listen and take notes. Then, say who can apply for each job.

# Work as a Tour Assistant!



This is a once-in-a-lifetime opportunity! If you like extreme sports and being in contact with nature, come and work in a natural park guiding whitewater rafting tours! Have fun and earn money! You need to have previous whitewater rafting experience and be a licensed swimming trainer. Accommodation and food is provided in well-equipped huts at the park.

# WORK AS A TOURIST GUIDE!



If you are outgoing, sociable and love to have fun, this could be a great job opportunity! You will be a tourist guide at the theme park of your preference. In Magic Kingdom you will be one of the lovely Disney characters, in Epcot, you can work wearing a country's typical costume and show tourists around. In Animal Kingdom you will dress as a safari guide and tell people about the animals we have! No training is needed. You will have access to all the restaurants and attractions at night. Lodging and meals are provided.

	What is she / he like?	What are her / his hobbies?
Mary		
Harry		

14. Say which job you would like to apply for. Then, discuss these questions.

- a. Are these usual or unusual jobs?
- b. What requirements do you need to apply for these jobs?
- c. What kind of people can apply for these jobs?
- d. Where would you like to work?